



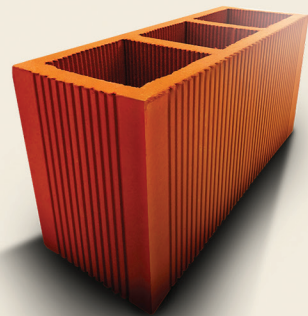
## Hercules

**(Structural Vertical Core Block - 4" x 8" x 16")**

Designed for load bearing perimeter walls and used extensively with reinforced steel and concrete for wall corners.

Block Weight: 6.7 kg / 14.7 lbs

Pallet Size: 234 blocks per pallet



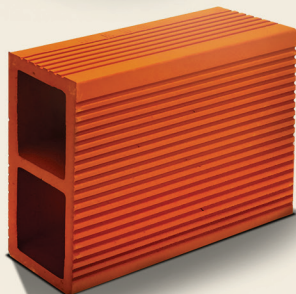
## Colossus

**(Structural Vertical Core Block - 6" x 8" x 16")**

Ideal for load bearing applications such as building foundations and external perimeter walls.

Block Weight: 9.8 kg / 21.6 lbs

Pallet Size: 168 blocks per pallet



## Classic

**(Horizontal Core Block - 4" x 8" x 12")**

Excellent for internal residential walls.

Block Weight: 4.8 kg / 10.5 lbs

Pallet Size: 312 blocks per pallet



STRONGER

- Up to 60% higher compressive strength than concrete blocks, making buildings built with Abel clay blocks more earthquake resistant.



ABSORBS  
LESS WATER

- When plastered, Abel clay blocks dry faster than concrete blocks so projects finish faster and masonry work costs are reduced.



FIRE RESISTANT

- Withstands fire longer than any other standard material with 70% higher thermal resistivity than concrete blocks.



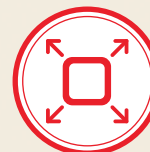
LIGHTER

- Easier to handle so more blocks can be laid in less time.
- Less weight on the foundation.
- Easier to transport.



LONGER LASTING

- Will not deteriorate due to alkaline, acids and salts allowing buildings to stand up better to the elements.



LARGER CORES

- Keeps buildings cooler thereby reducing electricity costs.
- Stronger structural integrity.
- Reduces sound transmissions.



DISTRIBUTED BY:

**Trinidad & Tobago**  
**ABS Construction Solutions Centres**  
and Hardware Dealers Nationwide  
Tel: 868-665-2235

**Grenada**  
**Sissons Paint Grenada Limited**  
Frequeute Industrial Park Road,  
Grand Anse, St. George  
Tel: 473-444-4157/1457

**Guyana**  
**Gafoors Hardwares**  
McDoom Estate, Greater Georgetown,  
East Bank, Demerara  
Tel: 592-223-9896



[www.abelbuildingsolutions.com](http://www.abelbuildingsolutions.com)



# BUILD STRONG

NOW SHOWING