

ABEL CLAY

THE BETTER BUILDING BLOCKS...

For decades, masons, builders, contractors and engineers from across the region have chosen ABEL Clay blocks as their preferred building material. With natural properties that make them stronger and more resilient than other construction systems, ABEL Clay blocks provide significant economic benefits while offering maximum quality and durability.

CLASSIC

HORIZONTAL
CORE BLOCK



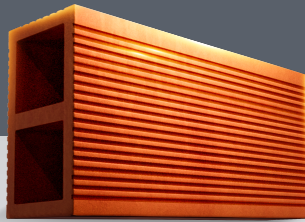
NOMINAL DIMENSION
4" X 8" X 12"

ACTUAL DIMENSION
90MM X 199MM X 300MM

WEIGHT
4.6 ± 0.2 KG
10.14 ± 0.44 LBS

JUMBO CLASSIC

HORIZONTAL
CORE BLOCK



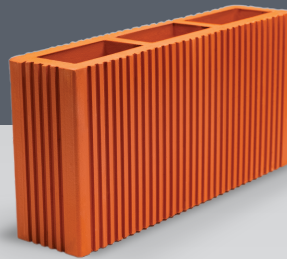
NOMINAL DIMENSION
4" X 8" X 16"

ACTUAL DIMENSION
90MM X 200MM X 394MM

WEIGHT
6 ± 0.2 KG
13.2 ± 0.44 LBS

HERCULES

STRUCTURAL VERTICAL
CORE CLAY BLOCK



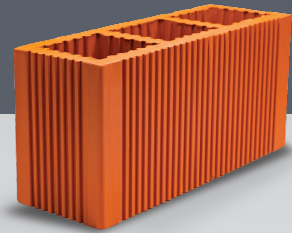
NOMINAL DIMENSION
4" X 8" X 16"

ACTUAL DIMENSION
90MM X 190MM X 390MM

WEIGHT
6.2 ± 0.2 KG
13.67 ± 0.44 LBS

COLOSSUS

STRUCTURAL VERTICAL
CORE CLAY BLOCK



NOMINAL DIMENSION
6" X 8" X 16"

ACTUAL DIMENSION
140MM X 190MM X 390MM

WEIGHT
9.2 ± 0.2 KG
20.28 ± 0.44 LBS

SELLING PRICE \$236.84 VAT EXCL. \$333.33 VAT EXCL. \$350.88 VAT EXCL. \$491.22 VAT EXCL.

SELLING PRICE \$270.00 VAT INCL. \$380.00 VAT INCL. \$400.00 VAT INCL. \$560.00 VAT INCL.

BUILDER'S TIP *The perfect block for upper levels and internal walls.* *Designed for load-bearing perimeter walls and used extensively with reinforced steel and concrete for corners.* *Ideal for load-bearing applications such as building and foundations and external perimeter walls.*



Together, we are
Family

